

# MyEquipAuctions

INDUSTRIAL DIVISION .com™

September 18, 2023

## TIMED ONLINE AUCTION

### NEW LATE MODEL ROBOTS AND ROBOTICS EQUIPMENT

OCTOBER 3, 2023 • NOVI, MI | SOUTH SAN FRANCISCO

#### ROBOTICS AUCTION



#### Collaborative Robots

- (30) Aubo Mosel I5 STD Edition 6-Axis Collaborative Robots
- (7) Yaskawa Model GP7 Motoman Medium Duty 6-Axis Collaborative Robots
- (3) Universal Robotics Model UR10e Medium Duty 6-Axis Collaborative Robots
- (2) Universal Robotics Model 5e Collaborative Medium Duty 6-Axis Robots
- (1) Aubo Model AUBO-TP Teaching Pendant



#### Robot Accessories

- (4) Optitrak motion capture cameras, model Flex 13-in depth
- (72) Intel Real Sense Model Depth Camera-D435 Cameras
- (18) Applied Engineering HD Mobile Workstations
- (3) Robot pedestal mount HD mobile bases
- (15) Advantech 4U model ACP-4320MB Rackmount Chassis



#### Manufacturing Support

- (1) Atlas Copco model G5FF Rotary Screw Air Compressor
- (1) Eagle model T100 series case sealer
- (2) Markforged Onyx Series 3D Printers
- (1) Comec model Easy 90 Mini Print Pad Printer
- (1) Hydraulic Pallet Jack



#### Office Furniture and Equipment

- (8) Apple 64 GB iPads (New and Used)
- (8) Adjustable Height model ZB01-4830-BH-I-001 Standing Desks
- (7) Lenovo and Dell Laptop computers
- (3) ELO, 10 touch screen LCD monitors,
- (Lot) Flat Screen TV's, Curved and Flat Screen Computer Monitors

**Leading Industrial And Commercial Liquidators.**

**Contact Rabin Worldwide For Your Liquidation And Equipment Needs Today.**

**Check Rabin.com For More Upcoming Food & Confectionery Equipment Auctions**

**+1.415.522.5700**

**Email: info@rabin.com**

See it all now at... **rabin.com**

# AUCTION CALENDAR

## COMPLETE 15 BBL BREW SYSTEM - TIMED ONLINE AUCTION

**AUGUST 17TH**

### Record Street Brewing Company

- Brewhouse
- Fermenters and Brite Tanks
- Walk-In Cooler
- Production and Restaurant Support
- Kitchen and Food Preparation
- Restaurant and Bar Equipment

Reno, NV



## JAPANESE NOODLE PRODUCTION FACILITY - TIMED ONLINE AUCTION

**AUGUST 24TH**

### Formerly of Super Frec USA

- Stainless Steel Tanks and Pumps
- Noodle Production Equipment
- Packaging Equipment
- Material Handling
- Production Support Equipment

Gardena, CA



## INDOOR CANNABIS GROWING & PACKAGING FACILITY- TIMED ONLINE AUCTION

**SEPT. 6TH**

### Formerly of an innovative producer of Rare cannabinoids

- Packaging Line & Support Equipment
- Cannabis Handling, Growing & Flowering Equipment
- Production Support Equipment (over 400+ lots)

Ontario - Canada



IN PARTNERSHIP WITH

## CHOCOLATE MOLDING, ENROBING & PACKAGING PLANT - TIMED ONLINE AUCTION

**SEPT. 7TH**

### Formerly of SweetWorks Confections

- Molding Lines
- Hollow Molding Lines
- Enrobing Line
- Wrappers
- Chocolate Tanks, Melters and Tempering Units
- Caramel Kitchen

Buffalo, NY



IN PARTNERSHIP WITH

## INDOOR AQUAPONIC VERTICAL FARMING PLANT- TIMED ONLINE AUCTION

**SEPT. 7TH**

### Formerly of Upward Farms

- Mayer - Visser Horti Systems Seeding Line (new 2020)
- Growing, Harvesting & Washing Departments
- Multi-Head Weighing, Filling & Pack-off Line
- Plant Support & Office Equipment

Brooklyn, NY



IN PARTNERSHIP WITH

## CONFECTIONERY PRODUCTION & PACKAGING EQUIPMENT- TIMED ONLINE AUCTION

**SEPT. 12TH**

### Formerly of Oak Leaf Confections Co.

- Packaging Lines & Equipment
- Base Panning & Pressed Candy Tableting
- Gum Mixing, Forming & Packaging Lines
- Chocolate "Sixlets" & Make-up Kitchen

Toronto, Ontario - Canada



IN PARTNERSHIP WITH

## MORE UPCOMING AUCTIONS - SEE WEBSITE FOR MORE INFORMATION

**SEPT. 13TH**

### COMPLETE POTATO CHIP PRODUCTION PLANT - AVAILABLE FOR TURN KEY + REAL ESTATE INCLUDED

#### Formerly of Mikesell's Snack Food Company

- Potato Receiving & Prep
- Batch Type Kettle Chip Cooking System
- Continuous Chip Cooking Department

Dayton, OH



IN PARTNERSHIP WITH

**SEPT. 27TH**

### 200 TPD RECYCLED PAPERBOARD MILL Formerly of Graphic Packaging International

- 87" Trim Cylinder Machine with 7 Black Clawson Bristol Formers
- Marquip 57" knife sheeter with multiple roll stands
- OCC stock prep system

Tama, IA



IN PARTNERSHIP WITH

**ORDERLY LIQUIDATION**

### LATE MODEL MDF (MEDIUM DENSITY FIBERBOARD) MANUFACTURING FACILITY Launched in 2020 - calplant. Over \$380 Million Invested

- (4) Straw Bale Receiving, Chopping & Pulverizing Lines
- (4) Primary Cleaning & Separating Systems
- Pallmann Refining Plant

Willows, CA



IN PARTNERSHIP WITH

**Leading Industrial And Commercial Liquidators.**

**Contact Rabin Worldwide For Your Liquidation And Equipment Needs Today.**

**Check Rabin.com For More Upcoming Food & Confectionery Equipment Auctions**

**+1.415.522.5700**

**Email: info@rabin.com**

See it all now at... **rabin.com**



# (7) UPCOMING AUCTIONS

10701 93rd Ave. N, Suite F  
Maple Grove, MN 55369

## Contour Machining

BEGINS: TUES, SEPT. 5TH  
6:00 AM CDT

ENDS: TUES, SEPT. 12TH  
10:00 AM CDT

Complete CNC Machine Shop Featuring Single Phase  
Fadal Machining Centers, Bridgeport Milling Machine,  
Workholding, Tooling and Much More!



2045 Wooddale Drive  
Woodbury, MN 55125

## Complete Fab/Machine Shop

BEGINS: THURS, SEPT. 7TH  
6:00 AM CDT

ENDS: THURS, SEPT. 14TH  
10:00 AM CDT

## Due to Owner Retirement



3101 N. 2nd Street  
Minneapolis, MN 55411

J.R. Williams Co., Inc. Phase 1 of 2

BEGINS: THURS, SEPT. 7TH  
6:00 AM CDT

ENDS: THURS, SEPT. 14TH  
10:00 AM CDT

## Complete Precision Machine Shop Due to Owner Retirement



8370 W. 35W Service Dr. NE  
Blaine, MN 55449

## September 2023 Machine Tool Marketplace

BEGINS: THURS, SEPT. 7TH  
6:00 AM CDT

ENDS: THURS, SEPT. 21ST  
10:00 AM CDT

## Wide Variety of Metalworking Machinery and Related Items



3101 N. 2nd Street  
Minneapolis, MN 55411

J.R. Williams Co., Inc. Phase 2

BEGINS: TUES, OCT 10TH  
6:00 AM CDT

ENDS: TUES, OCT. 17TH  
10:00 AM CDT

## Remaining Assets of Precision Machine Shop



1500 US-169  
Smithville, MO 64089

## Diversified Metal Fabricators

BEGINS: TUES, OCT. 17TH  
6:00 AM CDT

ENDS: TUES, OCT. 24TH  
10:00 AM CDT

Cincinnati and Accurshear Hydraulic Shears, Press  
Brakes from 45 to 90 Tons, Huth Hydraulic Tube Benders,  
Ironworker, Welders, Forklifts and Much More!



1808 Quincy Street NE  
Minneapolis, MN 55418

Volna Engineering Company

BEGINS: THUR, NOV. 23RD  
6:00 AM CST

ENDS: THURS, NOV. 30TH  
10:00 AM CST

For the past fifty years, Volna Engineering has provided  
one-of-a-kind solutions to difficult measurement and  
tooling problems for the aerospace and defense industries.



**Premier**  
Machinery Auctions, LLC

8370 W. 35W Service Drive NE  
Blaine, MN 55449

Phone: (612) 991-7008

info@premiermachineryauctions.com • www.premiermachineryauctions.com

**TIMED ONLINE AUCTION - CIVIL ENFORCEMENT  
ELECTRICAL DESIGN AND FABRICATING COMPANY  
9267 - 41 AVENUE • EDMONTON • ALBERTA • CANADA**

**BANKRUPTCY  
UTILITIES INSTALLATION COMPANY  
227, 47017 HIGHWAY 21 • CAMROSE COUNTY, ALBERTA, CANADA**

**CONSIGNMENT  
SHEET METAL SHOP • SPRUCE GROVE, ALBERTA, CANADA**

• THIS IS A **BidSpotter** TIMED INTERNET AUCTION •  
BIDDING STARTS TUESDAY, SEPTEMBER 12TH • CLOSING TUESDAY, SEPTEMBER 19TH • 9:00 AM

**EDMONTON**

- 28- (Never Put Into Service) Main Line Block Valve Control Stations
- 950 Cat Forklift
- Clark GEX-32 Electric Forklift
- Clark ECG32 Electric Forklift
- Broderson IC802D Deck Carry Crane
- 2014 GMC Sierra 2500 C.C., 4x4, 78,797 KM
- 2014 GMC 2500 HD SLE C.C. 4x4, 90856 KM
- Grove SM3146 Scissor Lift
- Mec 2034HT Scissor Lift
- Newage 587.5 KVA Generator, Detroit Diesel, Oilfield Enclosed Skid
- Shop Tools And Equipment Including Bandsaws, Hydraulic Press, Drill Presses, Shop Carts, Hand and Power Tools, 475 Field Communicator
- 3- Rigid 300'S With Numerous Attachments & Vices
- Air Compressors
- Pallet Rack
- 2- Light Towers
- Large Quantity Of Electrical Supplies, Cable And Wire, Breakers And Hardware
- Executive Offices And Boardroom

**CAMROSE**

- 2010 Vermeer RTX1250 Trencher, 2180 Hrs
- 2006 Freightliner M2 112T/A Digger Derrick Truck
- 1996 GMC Topkick Van Truck With 18' Van
- 2018 Brandt UPR1628 Dual Wheel, Tri-Axle Bumper Pull Equipment Hauler
- 2014 John Deere 410 KX Backhoe
- 2011 Caterpillar 430 E Backhoe
- 1988 Ditchwitch 4010DD Trencher With Ditchwitch Trailer
- 2009 Fontaine Drop Deck Tri-Axle Gooseneck Trailer
- 3- Sets Diversified Hi-Rails
- Backhoe And Loader Attachments, Augers
- Hand And Power Tools

**SPRUCE GROVE**

- 2014 John Deere 320E Skidsteer, 345 Hrs
- 7- Deck & Enclosed Trailers
- 2015 GMC 2500 Sierra SLE, Duramax Diesel, 203,000 KM
- Sheet Metal Shop For Light Installations, Manual Brakes & Shears Including 8' Roper Whitney Brake, Box And Pan Brakes, Edgers
- Slitters
- Hepa Filtration
- Welders, Ladders
- 40' Sea Can
- Executive Office Furnishings

SUBJECT TO ADDITIONS AND DELETIONS • EVERYTHING SOLD AS IS, WHERE IS WITH NO WARRANTIES OR GUARANTEES OFFERED OR IMPLIED • CASH • VISA & MASTERCARD TO \$3,000 WITH NO CREDIT CARD FEES, 3% OVER \$2,000 • BANK DEBIT CARD • CERTIFIED CHEQUES WITH CASH DEPOSIT SALE DAY • CHEQUES WITH LETTER FROM BANK GUARANTEEING PAYMENT • TRANSFERS AND WIRE TRANSFERS • SETTLEMENT ON SALE CLOSING DAY, NO EXCEPTIONS!!!  
13% BUYER'S PREMIUM ON ALL PURCHASES.

THESE AUCTIONS  
HAVE A FIVE DAY  
REMOVAL PERIOD,  
NO EXCEPTIONS!

www.foothillsauctions.com FOR UPDATES and COMPLETE TERMS • THIS IS A **BidSpotter** ON-LINE AND SIMULTANEOUS LIVE AUCTION

**FOOTHILLS**  
EQUIPMENT LIQUIDATION COMPANY LIMITED

AUCTION  
APPRAISALS  
LIQUIDATIONS

Ph: 780-922-6090 • Fax: 780-922-6248  
**www.foothillsauctions.com**



# Unprecedented 3-Day Auction Event!



## DAY 1 – LIVE WEBCAST AUCTION

Tuesday, September 19 at 10:00am ET

## DAY 2 & 3 – ONLINE AUCTIONS

Wednesday & Thursday, September 20 & 21 at 10:00am ET

# Complete World Class Tool and Die Manufacturing Facility

### FEATURING:

(21) CNC Vertical and Horizontal Machining Centers, (15) CNC Horizontal Boring Mills as New as 2016, Fidia 5-Axis CNC Vertical Machining Centers, (8) CNC Gantry & Bridge Mills, (6) Makino & Ingersoll Sinker-Type EDMs, Spotting Presses, Tarus CNC Gun Drills & Profile Mills, Injection Molder Up to 3000 Ton Cap., (25+) Overhead Bridge Cranes Up to 88 Ton Cap., Inspection, Toolroom, Rolling Stock, Plant Support & More!



PAMA Speedmill 3000 CNC Horiz. Milling & Boring Machine



FPT Dino X 350 IAT 5-Axis CNC HS Gantry Mill



MAKINO D200Z 5-Axis High Speed CNC VMC



Fidia KR211 7-Axis High Speed VMC



Ingersoll Gantry 2000 4-Axis CNC Sinker Type EDM



Tarus GDTTC510 – 6XRT CNC Gun Drilling Machine

**INSPECTION: By Appointment Only • INSPECTION LOCATION: Grand Rapids, MI**

### For additional information, contact:

Adam Herman at 631.249.5566 or  
adam.herman@prestigeequipment.com



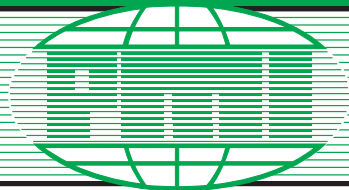
prestigeequipment.com

**Maynards**  
SINCE 1902

maynards.com

**WOLF**  
INDUSTRIAL ADVISORS

wolfindustrialadv.com



# AUCTION

**WIDE ARRAY OF FABRICATING, MACHINING, & WELDING EQUIPMENT; HIGH QUALITY FORKLIFTS, 25 T. GROVE CRANE, ROLLING STOCK, HUGE ASSORTMENT OF MISCELLANEOUS ITEMS, HOUSE BOATS, VEHICLES, & MUCH, MUCH MORE!**



500 T. X 16' ACCURPRESS HYDRAULIC PRESSBRAKE



HAAS MDL TM-3P  
VERTICAL  
MACHINING CENTER

10' X 1/4" MONTGOMERY  
INITIAL PINCH  
PLATE ROLL

JLG MDL G9-43A  
TELEHANDLER

2008



10' X 1/4" US  
INDUSTRIAL MACHINERY  
HYDRAULIC  
POWER SHEAR

1969 CORVETTE  
STING RAY CONVERTIBLE

Assets Surplus to the Continuing Operations of

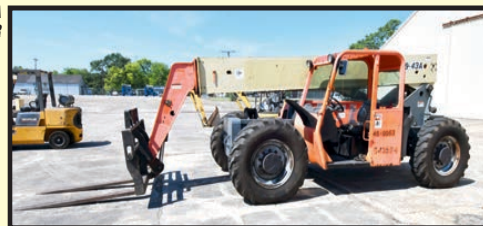
## GUS FABRICATION, LLC

2304A MAIN STREET, JEANERETTE, LA 70544

**THURSDAY, SEPT. 21 • 10:00 A.M.  
LIVE ONSITE W/WEBCAST**

### INSPECTION:

Tuesday &  
Wednesday  
Sept. 19 & 20,  
9:00 A.M.  
to 4:00 P.M.



FOR BIDDING AT THIS AUCTION. Go to [www.pmi-auction.com](http://www.pmi-auction.com) and click on BidSpotter or proxibid on our calendar page for this auction sale.

**BUYER'S PREMIUM:**  
15% ONSITE • 18% WEBCAST

Read Partial Terms  
& Conditions on Back Page

Sale Conducted By:

## PLANT & MACHINERY INC.

AUCTIONEERS • APPRAISERS • LIQUIDATORS • REAL ESTATE

Ronald G. Moore, LA Lic. #851 • PMI LA Lic. #AB-396

HOUSTON • DALLAS • ST. LOUIS

**Headquarters:**  
1304 Langham Creek Drive, Suite 454  
Houston, Texas 77084

PHONE: (713) 691-4401

FAX: (713) 672-7905

E-MAIL: [pmi@pmi-auction.com](mailto:pmi@pmi-auction.com)  
WEBSITE: [www.pmi-auction.com](http://www.pmi-auction.com)



# UPCOMING AUCTIONS



## Live Auction Via Webcast

Closure of Animated Manufacturing Co  
- A Metal Stamping and Tool & Die Facility

**SALE DATE**

**Sept. 19 • 10 AM CT**

**Location:** 106 W. 154th St., South Holland, IL 60473 | **Inspection:** September 18, 9 AM to 4 PM CT by appointment only



**FEATURING:** NIAGARA SE2-300-84-48UH SSDC Press, KOMATSU OBS 45-2 Gap Frame Press, (3) CLEARING-NIAGARA BN-110-11 Gap Frame Presses, (7) CLEARING & MINSTER OBI Presses, MECON 100CCS24 10,000 Lb Cradle Straightener, (4) NILSON Four Slide Machines, 2020 GARDNER DENVER LRS55-75F Air Compressor, 2020 MIKROPOR MKUS-550 Air Dryer, 5 Ton Bridge Crane, Stainless Steel Coil Stock & Support Equipment



## Online Auction

Surplus Assets to the Ongoing Operations of a  
Precision Spring Steel Fastener Manufacturer

**SALE CLOSING**

**Sept. 26 • 11 AM CT**

**Location:** 1375 Lunt Ave., Elk Grove Village, IL 60007 | **Inspection:** September 25, 9 AM to 4 PM CT by appointment only



**FEATURING:** (3) AMADA Gap Frame Presses, Coil Feed Lines, TIMESAVERS Disc Deburrer, Tool Room Machinery, 1500°F Austempering Furnace w/ 24"W x 12"H Opening, NEW HOLLAND K-90 Chip Wringer, CONTRX Rolling Gantry Cranes, Stradle Stackers & Plant Support Equipment

**PRE-AUCTION OFFERS INVITED FOR MAJOR ASSETS**

Bid Online via **BidSpotter**

Perfection Industrial Sales IL Firm Lic. #444.000438, Steve Kleba IL Auctioneer Lic. #441.001778

### AUCTION CONTACT:

**Jennifer Reiner • (847) 545-6374**  
jennifer@perfectionindustrial.com



**PERFECTION**  
Industrial Sales

[www.perfection.global/auctions](http://www.perfection.global/auctions)



# ONLINE ONLY AUCTION

## Surplus To The Ongoing Needs Of



# MILLTRONICS

**CNC BORING MILL, CNC LATHES, TOOL ROOM, MATERIAL HANDLING, SUPPORT**

**ONLINE BIDDING ENDS: September 26th • 1PM EDT**

**LOCATION: Waconia, MN**

**INSPECTION: Monday, September 25th from 10:00 A.M. to 4:00 P.M.**

**SALE DETAILS:** CNC HORIZONTAL BORING MILL: Milltronics HBM HPM110XT Series B, 4.3", CNC Built In Rotary Table, Fanuc Series 32i Mdl. B Controls 50 Taper, Table Approximately 60" X 48", 60 position ATC, Chip Conveyor, S/N:12629 (2014) • **CNC LATHE:** Milltronics ML 22 Series D CNC Lathe, 22" X 70", 12" Diameter 3-Jaw Chuck, Tailstock, 8 Station Turret, Milltronics CNC Control, Live Tooling, S/N:10950, Date 0949 • **LATHE:** Microcut Mdl.TC1740XV Geared head Engine Lathe, Gap Bed Lathe, 18" X 40", 10.5 Diameter 3-Jaw Chuck, Tailstock, 6" Gap. Inch/Metric, 30-2200 RPM, S/N:1740207319 • **VERTICAL MILL:** Microcut Vertical Milling Machine, Mdl.V1-1/2, Table 9" X 42" Power Feed All Directions, Newall 3' Axis DRO, S/N:20020749S • **GRINDERS:** Perfect Grinding Mdl. PFG-7020 AHR Powerfeed Surface Grinder, 27 3/4" X 78 3/4" Magnetic Chuck, Incremental Power Down Feed, 16" Wheel, Diameter X 2" Wide Paper Filtration System, S/N:9675002 (10/1996) • **Milltronics Mdl. SGS-618 Hand Feed Surface Grinder**, With 6" X 10" Walker Magnetic Chuck And Rectifier, S/N:8602002 (1986) • **BRAKE:** Accurpress 10' Mechanical Power Press Brake 8" Gap • **SHEAR:** Chicago D And K Power Squaring Shear, Mdl.UHS10135, 10' X 10 Gage, Back Gage, S/N:ES1149 • **BOX & PAN BRAKE:** Tennsmith Mdl. HBU48 48" Finger Braker, 16 Gage, S/N:17736 • **SAWS:** Phoenix Mdl.PA10 Horizontal Band Saw, S/N:PPA10018 • **Roll-In Vertical Band Saw** • **WELDER & PLASMA CUTTERS:** Miller Millermatic 251 Wire Welder • Thermal Dynamics Pax Master 75 Plasma Cutter • Hypertherm Powermax 600 Plasma Cutter • **PAINT BOOTH:** JBI Pressurized Paint Booth, Mdl.SD-32-PSB-S, Explosion Proof Lights Inside Diameter 14' W X 30' Long, Filter System, Drive in Type, S/N:18261, (1996) • **MATERIAL HANDLING:** Caterpillar 13,500#, Mdl. GC60KLP Forklift Propane, Solid Tires, Side Shift, S/N:AT8900662 • **Hyster S80XL8CS 8,250# Propane Forklift**, Side Shift, Solid Tires • **Clark Electric 3-Jaw Wheel Fork Lift Truck**, Mdl.TM159, Triple Mast, Side Shift, 2600# Capacity, S/N:TM247-1434-9091EB • **Assorted Hydraulic Pallet Jacks** • **Assorted Die Lift Tables** • **SHOP SUPPORT INCLUDING:** 6" X 6" Tennsmith Hand Angle Shear, Transcell Mdl.T1-500E Digital Platform Scale With 48" X 48" Platform, Assorted Size Granite Surface Plates, Bench Grinders, Belt Sanders, Drill Presses, CAT 40 & 50-Taper Tool Holders, Assorted Perishable Tooling, Assorted Electric & Pneumatic Hand Tools, Tool Cabinets, Kurt Vises, Job Boxes, Ladders, Flammable Liquid Storage Cabinets, Shop Benches, Adjustable Steel Pallet Racking, Cantilevered Stock Racks, Shop Fans, Plus More!



In  
Conjunction  
With



**Register to bid at [linkwarehouse.com](http://linkwarehouse.com)**

For More Information Contact: Randy Koster • [randy.koster@linkauctions.com](mailto:randy.koster@linkauctions.com)



## LINK AUCTIONS

Equipment Appraisals | Global Auctions | Industrial Asset Remarketing

475.273.0268

[linkauctions.com](http://linkauctions.com)

# TIMED ONLINE AUCTION

**AUCTIONS & LIQUIDATIONS, BAKERY, DAIRY PROCESSING, DISTRIBUTION CENTERS & MATERIAL HANDLING, FOOD PROCESSING & PACKAGING**

**SURPLUS TANK AND EQUIPMENT SALE**

**SEPTEMBER  
26TH**

**Mandan,  
ND**

## SURPLUS TANK & EQUIPMENT



### Stainless Mixing, Processing, Storage and Silo Tanks

- Over 100 different horizontal and vertical tanks
- 50k gallon Crepaco milk silo
- Two cone bottom processors, Crepaco 800 gallon, 1500 cone bottom
- Wide assortment of horizontal milk storage tanks
- Large inventory of open top stainless mix, blend & CIP tanks
- Numerous rectangular storage tanks, plus tank valves & accessories



### Bakery Production and Snack Food Equipment

- Fedco Depositor
- LVO SS Rack Washer
- Houdijk 11-zone cookie & confectionery cooling tunnels (2011)
- Sugar & Flour pressure sifter, & Vac-U-max collection system
- Mac Flour and Sugar Use bins
- Cone bottom processors • SEW Eurodrive Gear Boxes



### Dairy Processing and Cannery Equipment

- Dorr Oliver Dewatering Screens
- Alfa Laval plate heat exchangers
- Assortment of stainless steel pumps
- Stainless spray cooling tunnel 65'
- Tri Clamps and Valves
- Stainless Steel pipework, approximately 6000 feet



### Material Handling

- 15,000 lb. CAT Forklift
- 9,000 lb. heister forklift
- Nissan 5000 lb. and 3000 lb. forklifts
- Baker 3-wheel Electric Forklift
- Pallet Jacks

**Leading Industrial And Commercial Liquidators.**

**Contact Rabin Worldwide For Your Liquidation And Equipment Needs Today.**

**Check Rabin.com For More Upcoming Food & Confectionery Equipment Auctions**

**+1.415.522.5700**

**Email: info@rabin.com**

See it all now at... **rabin.com**



# ★ ★ **ONLINE ONLY AUCTION** ★ ★



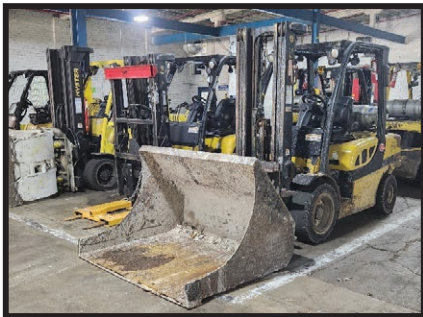
**Graphic  
Packaging**  
INTERNATIONAL

117 Siegel Street  
Tama, IA 52339

**COMPLETE  
PLANT  
CLOSURE**

**DATE: BIDDING ENDS WED, SEPTEMBER 27TH**  
Inspection: Mon. & Tues, Sept. 25th & 26th from 9:00 AM – 4:00 PM

## **200 TPD RECYCLED PAPERBOARD MILL**



### • HIGHLIGHTS •

- 87" Trim Cylinder Paper Machine with Langston Winder
- Marquip 57" Knife Sheeter
- Bird & Black Clawson Pressure Screens
- GL&V Refiners
- (2) CAT Wheel Loaders
- (20) Late-Model Hyster & Yale LP Forklifts with Assorted Attachments
- Assorted Man Lifts
- Broderson Carry Deck Crane
- Goulds Stainless Centrifugal Pumps
- Facility & Support Equipment
- Complete Machine Shop

**Massive MRO Spare Parts, Supplies, and Stores Inventory with New and Rebuilt Motors, Pump and Pump Parts, Bearings and Seals, Valves and Fittings, Electrical Parts, PLC and Drive Controls, Spare Screen Baskets, and Much More!**

*Terms: To be sold in accordance w/CRG terms as published on web & auction catalog.*

Sale In Conjunction With



**rabin**



**Can-Am Machinery Inc.**  
Technical Advisors

**www.crgllc.com • (800) 300-6852**



# WEBCAST AUCTION

## SURPLUS EQUIPMENT FROM GASTON COUNTY DYING MACHINE

1310 Charles Raper Jonas Hwy. • Mt. Holly, North Carolina 28120  
Northwest Suburb of Charlotte, North Carolina



**WEBCAST AUCTION OF HEAVY FABRICATING AND WELDING EQUIPMENT INCLUDING JETLINE SEAM WELDER, WELDING MANIPULATORS, HYDRAULIC PRESS, PLATE ROLLS, BRAKES, SHEARS, FLANGERS, SAWS, WELDING POSITIONERS, WELDING TABLES AND ACCESSORIES, FORKLIFTS TO 12,000 LB., TOOLROOM MACHINERY, SCRAP AND RAW MATERIAL**

**SALE DATE: WED, SEPTEMBER 27TH • 10:00 AM**

**INSPECTION:** Day Prior from 10:00 AM to 4:00 PM by appointment only with [jeffjr@cia-auction.com](mailto:jeffjr@cia-auction.com)

### SEAM WELDER

- 15' Jetline Model SWC-3A Seam Welder w/ Miller Deltaweld 452 Power Supply

### WELDING MANIPULATORS

- 13' x 13' Ransome 331N Track Mount Welding Manipulator w/ 25' Track
- 12' x 12' Ransome 1212 Fixed Base Welding Manipulator (Updated)

### WELDING POSITIONERS, TANK ROLLS, ACORN TABLES

- Ransome and Mark V Tilting and Rotating Welding Positioners
- (2) 40 Ton Aronson WRD40 Tank Turning Roll Sets
- (10) Smaller Motorized Welding Positioners
- (5) Sets of Smaller Tank Rolls

### WELDING TABLES, WELDERS AND RELATED

- (20) Acorn Style Welding Tables from 4' x 4' to 6' x 6'
- (20) Miller MP65E Welders
- Lincoln G8000 Gas Welder

### HYDRAULIC PRESS, BRAKE AND SHEARS

- Large Quantity Welding Supplies
- 400 Ton Approx. Pacific Straightside Hydraulic Press
- 400 Ton x 12' Chicago 400-F12 Hydraulic Press Brake
- Press Brake Dies Including 12' 4-Way Die
- ½" x 12' Wysong Model 1250 Power Squaring Shear
- 1/4" x 10' Summit Hydraulic Power Squaring Shear

### PLATE ROLLS, ANGLE ROLLS, FLANGERS, TUBE BENDERS

- (3) Bertsch Mechanical Plate Rolls, 12', 10' and 6'
- 8 Ga. x 4' Niagara Mechanical Plate Roll
- Kling and Senco Vertical Angle Bending Rolls w/ Dies
- 48" and 36" Quickwork Circle Shear and Knuckle Flangers and Dies
- Custom-Built Heavy-Duty U-Shape Rollforming Machine
- (2) Huth Style Horizontal Hydraulic Benders w/ Dies
- Horizontal Hydraulic Flute Machine Press

### FORKLIFTS, TOOLROOM, MISC. MACHINERY

- 12,000 Lb. Cat V120 Diesel Yard Type Lift
- (5) Other Forklifts to 10,000 Lb.
- T-Drill Model T-150 Collaring Drill
- Lathes, Mills, Radial Drills, Toolroom Machinery, Tooling
- (10) Vidmar Cabinets Loaded w/ Perishable & Indexable Tooling
- Large Capacity Inspection Tools
- Whitney 647 CNC Single End Punch w/ Tooling
- 14" x 16" HE&M 1200A-1 Horizontal Band Saw
- 48" and 36" Blast Cabinets
- Vertical Band Saws to 36"
- (15) Self Dumping Hoppers from ½ to 2 Yard

### RAW MATERIAL, SCRAP AND RACKS

- Raw Material Including Stainless, Heavy Plate, Tube, Structural (Some with Certs)
- Various Cut-Offs of Plate, Sheet, Tube, Structural
- (15) Fabricated Steel Vertical Plate Racks
- (10) Cantilever Bar Racks, Various Size and Style



18% BUYERS PREMIUM IN  
EFFECT FOR ALL PURCHASES

Cincinnati Industrial Auctioneers, Inc. – License No. 5610  
Joseph M. Luggen – License No. 9333

**BidSpotter**

**CINCINNATI  
INDUSTRIAL  
AUCTIONEERS**  
auctioneers | appraisers | since 1961

**Check our website for ongoing & future auctions!**

For Photo Gallery & Sale Catalog & Additional Information Visit:

**[www.cia-auction.com](http://www.cia-auction.com)**



# ONLINE ONLY AUCTION

## Surplus To The Ongoing Needs Of GE Aerospace

**ONLINE BIDDING ENDS: September 28th • 1PM EDT**

**ASSET LOCATION: 1000 Western Avenue • Lynn, MA 01905**

**INSPECTION: By Appointment Only**

**FEATURING: CNC VERTICAL MACHINING CENTERS:** 2007 Doosan MV5025/50 CNC Vertical Machining Center, Travels: X-51", Y-25.5", Z-24.6", 314.9 IPM Maximum Cutting Feedrate, 7.9" - 32.5" Spindle to Table Surface, Complete with CAT-50 Taper Spindle, 30-Position Automatic Tool Changer, 9.84" Maximum Tool Length, 4.92" - 8.66" Maximum Tool Diameter, 23.45 LBS Maximum Tool Weight, Renishaw RMI-Q Tool Monitor, Mist Blaster Mist Collector, Chip Blaster J30 1,000 PSI High Pressure Coolant Pump, Fanuc Series 18i-MB CNC Controls, Kaukan Oil Cooler, S/N: AV631168 • **Monarch VMC 75 CNC Vertical Machining Center**, with 4" x 20" Slotted Table, S/N: 7616117 (1976) • **CNC VERTICAL BORING MILLS:** (2) Bullard Dynatrol Retrofitted by Phoenix 48" CNC Vertical Boring Mill, Complete with 24 Position Automatic Tool Changer, Approximate 60" Under the Ram, Mayfran Elevated Chip Conveyor, GE Fanuc 15-T CNC Controls, Work Station (No PC) (Rebuilt by Phoenix in 2002) • **Devlieg Bullard Rebuilt by Estec Engineering 46" CNC Vertical Boring Mill**, 48" Under Rail, Complete with 46" Chuck, 24 Position Automatic Tool Changer, Titan Elevated Chip Conveyor, 40-HP Motor, GE Fanuc 15-T CNC Controls, S/N: 32728 • **VERTICAL TURRET LATHE: Bullard 56" Vertical Turret Lathe**, 48" Under Rail, Complete with 56" Chuck, 5-Station Turret, Side Head, Sony Magnescale SH12 2-Axis DRO, 40-HP Motor, Pendant Controls, S/N: 33625 (1981) • **ROTARY SURFACE GRINDER: Blanchard 36" Rotary Surface Grinder**, 36" Magnetic Chuck, 1/4" Lip on Chuck, Complete with Segmented Grinding Wheel, Filtration, S/N: 12144 (1966) (No Dust Collector) • **JIG MILL: Devlieg 4B72 Jig Mill**, 36" x 72" Slotted Table, 4" Spindle Diameter, #50 Taper Spindle, 20" Spindle Travel, 48" Vertical Travel of Headstock, Complete with Producto 30" Rotary Table, Anilam 1100 Comando Controller, GE Fanuc Power Mate Control for the Rotary Table • **VERTICAL BROACHES: Colonial MVT-15-100 Vertical Broach, Dual Side, Hydraulic**, 15-Ton Capacity, 100" Stroke, Complete with CPS 20 PLC Operator Interface, (Both Sides), Berendson Hydraulic Power Unit, 25-HP Motor, Dorit Dry Flow Mist Collector, S/N: 15652-0795 • **Colonial MVT-15-100 Vertical Broach, Dual Side, Hydraulic**, 15-Ton Capacity, 100" Stroke, Complete with CPS 20 PLC Operator Interface, (Both Sides), Berendson Hydraulic Power Unit, 25-HP Motor, Dorit Dry Flow Mist Collector, S/N: N/A • **Lapoint Vertical Dual Side Broach**, Hydraulic, 16-Ton, 50" Stroke, Complete with Hydraulic Power Units, Pendant Controls • **CNC HORIZONTAL MILL: Bourn & Koch, OMNI OM2A CNC Horizontal Mill**, S/N: 445 • **CNC LATHE: Cincinnati Milacron Cinturn 18C CNC Slant Bed Lathe**, Complete with 12-Station Turret, 6-Station Vertical Turret, Gorgensen Elevated Chip Conveyor, 50-HP Motor, GE Mark Century 2000 CNC Controls, Torit Dryflow Mist Collector, S/N: 5305C18-83-016 (1983) • **PRESSURE TESTER: Custom Built Pressure Flow Test Stand**, with 28" x 28 Table, Endress-Hausa RIA 450 Digital Temperature Controller, Hydraulic Power Supply, Pricess PLC Operator Interface • **PARTS WASHERS: Better Engineering Carousel Type Heated Parts Washer**, 52" Basket, Digital Temperature Controls, S/N: 21328 • **Stainless Steel Drop In Type Parts Washer (Scrap)**



**Register to bid at [linkwarehouse.com](http://linkwarehouse.com)**

For More Information Contact: Mat Koster • [mathew.koster@linkauctions.com](mailto:mathew.koster@linkauctions.com)



**LINK AUCTIONS**  
Equipment Appraisals | Global Auctions | Industrial Asset Remarketing

**475.273.0268**

**[linkauctions.com](http://linkauctions.com)**



# WEBCAST AUCTION



PLANT CLOSED  
**BOLTTECH MANNINGS, INC.**

501 Mosside Blvd. • North Versailles, PA 15137



**WEBCAST AUCTION OF LOW VOLUME CONTRACT MANUFACTURER WITH LATE MODEL CNC MACHINING EQUIPMENT, NEW AS 2022, FEATURING (8) DOOSAN TCS, (3) DOOSAN HMCS, (9) HAAS VMCS, (500+) TOOLHOLDERS, 4TH AXIS & ACCESSORIES, (2) COSEN SAWS, HD TOOLROOM MACHINERY & COMPLETE QUALITY DEPT. WITH LIKE NEW ZIESS CMMS**

**SALE DATE: TUES, OCT. 3RD • 10:00AM EST**

**INSPECTION:** Monday October 2nd from 10:00AM to 4:00 PM

## FEATURING:

### CNC TURNING CENTERS

- (4) Doosan PUMA TT1800SY Twin Turret CNC Turning Centers (New 2016/17)
- (2) Equipped with 1,000 PSI Chipblaster Coolant Systems
- Doosan Puma 300C CNC Turning Center (2012)
- Doosan Puma 2100 CNC Turning Center (2011)
- Doosan Puma 280 CNC Turning Center (2009)
- Doosan Puma 2000SY CNC Turning Center (2007)

### CNC HORIZONTAL MACHINING CENTERS

- Doosan NHP 4000 CNC Horizontal Machining Center (New 2022- Low Hours!)
- Equipped with 4-Station Doosan RPS 4000 Rotary Pallet System
- Doosan HC 400 CNC Horizontal Machining Center (2014)
- Doosan DHC 400 CNC Horizontal Machining Center (2006)

### CNC VERTICAL MACHINING CENTERS

- Haas VF4SS CNC Vertical Machining Center (New 2015)
- Haas VF4 CNC Vertical Machining Center
- (5) Haas VF3 CNC Vertical Machining Centers – (1) w/ Pallet Changer
- Haas VF2 CNC Vertical Machining Center
- Haas Mini Mill CNC Vertical Machining Center

### TOOLING, ATTACHMENTS & ACCESSORIES

- (500+) CAT 40 & 40 Taper Toolholders
- (5+) 4th Axis Attachments
- Large Qty. Misc. – Tombstones, Vises, Chucks, Etc.

## TOOLROOM MACHINERY & RELATED

- (2) Cosen C-320 Auto Horizontal Dual Column Band Saws (New as 2020)
- (2) Engine Lathes by Harrison & Hwacheon up to 21" x 120"
- (2) Surface Grinders by ACER up to 14" x 28"
- (3) Vertical Milling Machines by Bridgeport & JET up to 3 HP
- (5) Wire EDMs by Fanuc & Charmilles
- Welders, Ironworkers, Blast Cabinets & More

## QUALITY CONTROL DEPARTMENT

- Zeiss DuraMax 5/5/5 CMM (New 2022)
- Zeiss Contura 10/16/6 CMM (New 2017)
- B&S microxcel 7-10-5 CMM
- FARO Gage Plus Portable CMM (New 2021)
- Large Qty. Misc. – Digital Height Gages, Pin, Plug, Ring & More

## PLANT SUPPORT

- (40+) Sections of HD Pallet Racking



18% BUYERS PREMIUM IN  
EFFECT FOR ALL PURCHASES

Cincinnati Industrial Auctioneers, Inc. – License No. AY002219

Jeffrey L. Luggen – License No. AU003274R • Joseph M. Luggen – License No. AU005954

**BidSpotter**

**CINCINNATI INDUSTRIAL AUCTIONEERS**  
auctioneers | appraisers | since 1961

**Check our website for ongoing & future auctions!**

For Photo Gallery & Sale Catalog & Additional Information Visit:

**www.cia-auction.com**



# ONLINE AUCTION

Manufacturer • SST Conveyor Components, Inc.

## Specialty Tube Forming, CNC Machine Tools, Injection Molders, and Support Equipment

**Huge  
Selection of  
Steel Tubing  
Inventory**

Lots begin closing at 10am ET  
**Thursday, October 5**  
Assets located in  
**Loveland, Ohio**

### Highlights of the Auction

Late-model CNC lathes, injection  
molders, tubing swaging / taper lines,  
presses, plant support from SST  
Conveyor Components, Inc.



- 2018 Doosan Puma 4100LB CNC horizontal turning center
- 2017 Doosan Puma GT2600L CNC horizontal turning center
- 2015 Doosan Puma TT1800SY CNC horizontal turning center
- 2006 Mazak CyberTech Turn 4500MT CNC lathe
- 2017 FCS HA440SV 440-ton servo-hydraulic hybrid injection molder
- 2016 FCS HA220SV 220-ton servo-hydraulic hybrid injection molder
- 2016 FCS HA165SV 165-ton servo-hydraulic hybrid injection molder
- HPM, Engel and VanDorn injection molders from 100 to 400 ton
- (3) complete tubing swage/taper fabrication lines
- South Bend 125-ton OBI press
- Bel-O-Vac BV 48" x 48" vacuum former
- JLG 35EL aerial platform lift
- TRAK DPM2 CNC vertical mill
- Free standing crane system
- Forklift trucks
- Welders
- Plant support

Auction lots are subject to change without notice.  
See online catalog for available lots.  
Garth B. Wilber, OH auctioneer 57199362559

For more information:  
**HyperAMS.com/imt**

**HYPERAMS**  
asset maximization services

# ONLINE PUBLIC AUCTION

**SALE END DATE:**  
**THURSDAY, OCTOBER 19TH**  
**10 AM**

**K-ZELL METALS, INC.**  
**RETIREMENT AUCTION**  
1725 E. Broadway Rd. • Phoenix, AZ 85040



BYSTRONICS 4020, 10KW FIBER LASER; BYSTRONIC CNC MATERIAL HANDLING SYSTEM; BYSTRONIC EXPERT 100 CNC PRESS BRAKE; BYSTRONIC EXPERT 40 CNC PRESS BRAKE; BYSTRONIC PR150 CNC PRESS BRAKE; BYSTRONIC PR250 CNC PRESS BRAKE; CELL MATE 10TON CNC PRESS BRAKE; HORN CBRE 65MM CNC TUBE BENDER; LISSMAC SBM-L 1500 GIS2-60 EDGE ROUNDING & DEBURRING MACHINE; TRD25-02 FLEXDRILL CNC MILL W/UPGRADED CONTROL, FULL 3D; BIKO 8'X1/2" PLATE ROLL, LOWN 6' X 16GA PINCH ROLL; 10' WEBB ROLL; (3) ROBOTIC WELDERS; 25+ WELDERS; WELDING TABLES; T-SLOT TABLES; AIR COMPRESSORS; AIR DRYERS; FORKLIFTS; STUD WELDERS; HORIZONTAL BAND SAWS; VERTICAL BAND SAWS; PLASMA CUTTERS; ROMER ARMS; INSPECTION EQUIPMENT; WIDE BELT SANDERS; (6) COLUMN LIFTS; SEAM WELDERS; ANVER VACUUM LIFTS; DOTEC AIR BALANCE; STORAGE CONTAINERS; MUCH MORE!!!

Buyer's Premium: 13% **BidSpotter**



Sale Conducted by:

**The Arizona Auctioneers.**

Auctioneer: Stephen M. Sommers

• AUCTIONEERS • APPRAISERS • LIQUIDATORS •

602-258-6981  
PHOENIX

602-257-1935  
FAX

1802 South First Avenue • Phoenix, Arizona 85003  
**www.arizonaauctioneers.com**



# PUBLIC AUCTION

**Online Timed**

**Company  
Closed**

## Esquire Tooling

**Machining & Fabrication Shop**  
111 North Hwy 24 Commerce, TX (Dallas Area)

**Featuring CNC & Conventional Machine Tools**

**Live Now / Bid Now**

**Auction Ends: Thursday October 26, Starting at 10AM Central**



**This Is Only a Partial Viewing**

**See Everything at: [www.stoneauctioneers.com](http://www.stoneauctioneers.com)**

**Inspections Daily, Monday - Thursday**

**Plus: Real Estate  
For Lease By Owner**



**STONE**  
AUCTIONEERS & APPRAISERS

**141 Lenora Drive Tuscaloosa, AL 35401 / Contact Jamison Stone Ph: 662 574 0470**



# TIMED ONLINE ONLY AUCTION

*By Order of Board of Directors – Formerly National Metals*

## MASSIVE METALS & SURPLUS FACILITY

**FEATURING:** 300,000lbs Usable Plate Aluminum, Bar Stock, Titanium, Shipping Containers & Much More!

**EVERYTHING MUST SELL!**



**Lots Begin Closing: Wednesday, October 18th at 9:00am PT**

National Metals – 1400 Orange Street, Rosamond, CA 93560

**INSPECTION:** Tuesday, October 17th, 9:00am to 4:00pm PT, Morning of Sale or By Appointment



*Sale Conducted by:*  
**TAUBER-ARONS, INC.**  
Industrial Auctioneers & Liquidators since 1892

**For An Auction Calendar Visit Our Website:**

**www.tauberaronsinc.com**  
**323.851.2008 | 888-648.2249**

**BID ONLINE AT:**

**BidSpotter**

# INDUSTRIAL

*Machine Trader®*

published by



a leader  
in business  
communications

## INFORMING, SUPPORTING, and DELIVERING

improving access to essential information for businesses

access to the **ESSENTIAL DATA AND INFORMATION** to make informed decisions

GEO-TARGETED ad placement, self-serve access for clients, and site-wide inclusion

515-574-2261

800-203-9960

industrialmachinetraider.com

catalystcommunicationnetwork.com

WEBCAST AUCTION

# Metal Fabricating METAL CRAFT, INC.

3209 S. Church St. in Rocky Mount, NC

**WEDNESDAY, SEPT. 20**  
**Starting at 10AM ET**

INSPECTION: Day Prior to Auction from 9AM to 4PM

2020 Accurl Genius Plus B40220 Hydraulic Press Brake • Durma HAP 37200 Press Brake • Cincinnati 2512 & Atlantic Shears • Peddinghaus 210AD/16 Ironworker • Imac Angle Shear • Piranha Ironworker • Pexto & Cole-Tube Plate Roll • Whitney Jensen Finger Brake • Baleigh Tube Bender, Notcher, and Beveler • Angle Roll • Hyd-Mech Band Saws • Mills • Drill Presses • Lathes • Bridge Crane • (20+) Miller & Lincoln Welders • Pipe Threaders • Anver Vacuum Lifter • JLG Scissor Lifts • Job Boxes • Layout Tables • 2019 UniCarriers 60 Forklift • Ford F-350 & (4) Ford F150 Pickup Trucks • (7) Cargo & Utility Trailers • Tractor Mowers • Huge Quantity of Mechanical Contractor Tools & Fittings • Lots of Steel & Stainless Pipe, Plate, Sheet, Angle & Scrap



REAL ESTATE TO BE AUCTIONED AT NOON - (2) INDUSTRIAL BUILDINGS TO BE SOLD ON A 4.71 ACRE PARCEL. 18% BP with Bidspotter.com | Thomas C. Bowling Auction Lic. #10526 | Myron Bowling Auctioneers NC Lic. #7966

**MYRON BOWLING AUCTIONEERS, INC.** (513) 738-3311 | MyronBowling.com

BY ORDER OF THE BOARD OF DIRECTORS AND OTHER INDIVIDUALS  
WE WILL ON

**TUESDAY, SEPTEMBER 26th • 10:00 A.M.**  
**OFFER FOR SALE BY PUBLIC ON-LINE AUCTION**

**MAGNESIUM FOUNDRY EQUIPMENT AND MACHINERY**  
**SURPLUS TO THE ONGOING OPERATIONS**

**BELONGING TO: TERVES INC.**

**24112 ROCKWELL DR. • EUCLID, OH 44117**

**REGISTER TO BID AT:** <https://tinyurl.com/3axpk528>

Kurtz Aluminum Low Pressure Caster Type Al 10-7TC w/Hydraulic Unit, Metamag Furnace System, Controls & Furnace, ABB Foundry Plus Robot w/Controls, Doosan Milling Machine, 2 Glatt Powder Coaters, Attritor Mill, Vacuum Pumps, AVS Vacuum Furnace w/Control, Planetary Mixer, Air Compressors, Lucifer Furnace, Haas ST-35 Y Milling Machine, Hobart Welder, Polymer Systems Pelletizer, Matheson Gas Containment Cabinets, Ingerson Rand Dryer, Affinity Chiller, Leistritz Twin Screw Small Extruder, Provent Vacuum Table, Elnik Vacuum Furnace, A.S.S. Vacuum Furnace, Aslan Machine Saw PKS-503, 2 Oliver Saws, Bulletin Starter Cabinet, Cummins Emergency Duty Generator 682FDR7030, 2250 Gal Air Surge Tanks, Eaton Bus Bar, New Amcot Cooling Tower ST-125, Do All Explosion Proof Plate Saw, Starters, Breakers, Ridgid Tools, Safety Switches, Disconnects, Asst Belts, Control Panels, Valves, AB Modules, Lincoln Welding Rod 7018 And Numerous Other Items.

ALL INFORMATION DEEMED RELIABLE BUT NOT GUARANTEED

AUCTIONEER'S NOTE: THERE IS A 18% BUYER'S PREMIUM APPLIED TO ALL SALES

[www.grossmaninc.com](http://www.grossmaninc.com)



**Grossman Inc.**  
Auctioneers, Appraisers  
& Liquidators

(216) 631-0085  
Fax (216) 631-8538

LICENSED AS AN AUCTION COMPANY IN ACCORDANCE WITH THE LAWS OF THE STATE OF OHIO

# ONLINE AUCTION SALE MACHINERY AND EQUIPMENT

Online Bidding Ends:

Thursday, September 28 at 12:00 Noon

Assets Located at:

**LUNACY BREWING COMPANY**

1500 Kings Highway • Haddon Heights, NJ 08035



FOR MORE  
INFORMATION

Visit  
**Comly.com**

**AUCTION TO INCLUDE:** Brewhouse, Fermenters, Bright Tanks, Glycol Chiller, CIP Chart, Boiler, Grist Case, Mill, Keg Washer/Filler, Single Barrel Brewhouse, Walk-In Beer Box, Reach-In Freezer, Tables, Chairs, Canning Machines, Patio Furniture, Pallet Jack, Etc.

**Preview:**

Monday, September 25  
from 9:00 AM to 4:00 PM

Wm. F. Comly & Sons, Inc.



**COMLY**  
AUCTIONEERS & APPRAISERS  
1834

(215) 634-2500 - [auctions@comly.com](mailto:auctions@comly.com)

NEW MARKETING OPTION



# DRIP CAMPAIGN

a series of automated emails sent to people who take a specific action on your website

1 Initial Email

2 Follow Up Email

3 Reminder Email

A drip campaign is a series of automated emails sent to people who take a specific action on your website. For any given action, you can choose how many emails to send and the rate at which to send them.

published by  
**CATALYST**

**GREAT FOR AUCTIONS,  
EVENTS, AND MORE!**

**call 800-203-9960**



## Upcoming Auctions

Visit our sister site!

**MyEquipAuctions**  
.com**BidSpotter**  
FIND  
INDUSTRIAL  
EQUIPMENT  
& MORE.

Date	Auctioneer	Auction Type	Location	
<div>September</div> <div>Click Here to Visit the Auction Calendar</div>				
09/12/23	Miedema Asset Management Group	ONLINE AUCTION	Zeeland, MI	<a href="#">View &gt;</a>
09/12/23	Salvatore Auction, Inc.	ONLINE AUCTION	North Kingstown, RI	<a href="#">View &gt;</a>
09/12/23	Rabin Worldwide	Time Online Auction	Ontario, Canada	<a href="#">View &gt;</a>
09/12/23	Cincinnati Industrial Auctioneers	Webcast Only Auction	Cincinnati, OH	<a href="#">View &gt;</a>
09/12/23	Myron Bowling Auctioneers, Inc.	Webcast Only Auction	Mason, OH	<a href="#">View &gt;</a>
09/12/23 to 09/15/23	Foothills Equipment Liquidation Co. Ltd	Online Auction	MULTI LOCATION	<a href="#">View &gt;</a>
09/13/23	Dinosmo Industrial Auctions	Live Onsite Auction	Port North, OH	<a href="#">View &gt;</a>
09/13/23	Rabin Worldwide	Time Online Auction	Dayton, OH	<a href="#">View &gt;</a>
09/14/23 to 09/15/23	Henderson Auctions	Live Auction with Online Bidd...	Livingston, LA	<a href="#">View &gt;</a>
09/14/23	Perfection Industrial Sales	Live Auction Via Webcast	Appleton, WI	<a href="#">View &gt;</a>
09/14/23	Perfection Industrial Sales	ONLINE AUCTION	Appleton, WI	<a href="#">View &gt;</a>
09/16/23	Henderson Auctions	ONLINE ONLY AUCTION	Livingston, LA	<a href="#">View &gt;</a>
09/19/23	Perfection Industrial Sales	Live Auction Via Webcast	South Holland, IL	<a href="#">View &gt;</a>
09/19/23	Maynards Industries	Webcast Only Auction	Grand Rapids, MI	<a href="#">View &gt;</a>
09/21/23	Plant & Machinery Inc.	Live Onsite With Webcast	Jeanerette, LA	<a href="#">View &gt;</a>
09/25/23 to 09/28/23	Comly Auctioneers & Appraisers	Online Auction	Haddon Heights, NJ	<a href="#">View &gt;</a>
09/26/23	Perfection Industrial Sales	Live Auction Via Webcast	Elk Grove Village, IL	<a href="#">View &gt;</a>
09/27/23	Rabin Worldwide	Time Online Auction	Tama, IA	<a href="#">View &gt;</a>
09/27/23	Myron Bowling Auctioneers, Inc.	Timed Online Auction	Lynchburg, VA	<a href="#">View &gt;</a>
09/27/23	Cincinnati Industrial Auctioneers	Webcast Only Auction	Mt. Holy, NC	<a href="#">View &gt;</a>

[www.industrialmachinetrader.com/auctions/upcoming](http://www.industrialmachinetrader.com/auctions/upcoming)